

TSX: LUN
OMX: LUMI



lundin mining

TD Securities Mining Conference

January 25, 2012

Caution Regarding Forward Looking Statements

This presentation contains forward-looking statements. These forward-looking statements are not based on historical facts, but rather on current expectations and projections about future events. These forward-looking statements are subject to risks and uncertainties. These risks and uncertainties could cause actual results to differ materially from the future results expressed or implied by the forward-looking statements.

Such risks may include, without limitation: risks and uncertainties relating to foreign currency fluctuations; risks inherent in mining including environmental hazards, unusual or unexpected geological formations, ground control problems and flooding; risks associated with the estimation of mineral resources and reserves and the geology, grade and continuity of mineral deposits; the possibility that future exploration, development or mining results will not be consistent with the Company's expectations; the potential for and effects of labor disputes or other unanticipated difficulties with or shortages of labor or interruptions in production; actual ore mined varying from estimates of grade, tonnage, dilution and metallurgical and other characteristics; the inherent uncertainty of production and cost estimates and the potential for unexpected costs and expenses; and commodity price fluctuations.

For further details of other risks and uncertainties see Risk Factors Relating to the Company's Business in the Company's Annual Information Form and in each management discussion and analysis.

Note: All dollar amounts are in US dollars unless otherwise denoted

Key Asset Overview

lundin mining

European Operations

- **Neves-Corvo, Portugal** (Cu/Zn)
- **Zinkgruvan, Sweden** (Zn/Pb/Cu)
- **Aguablanca, Spain** (Ni/Cu)
- **Galmoy, Ireland** (Zn/Pb)

Tenke Fungurume

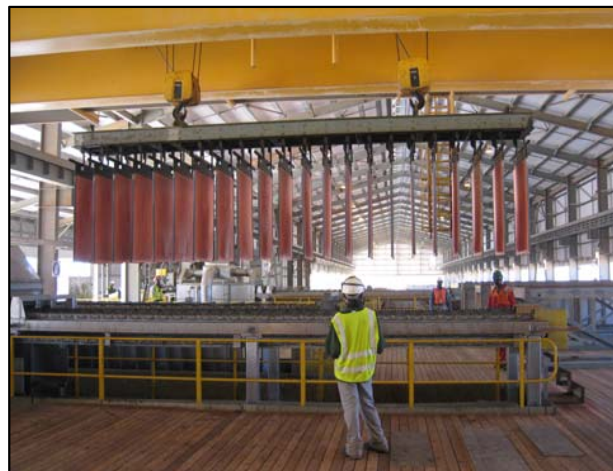
- **Tier 1 Cu/Co asset**
- 24% interest
- Freeport-McMoRan operator
- Phase II Expansion to 195ktpa Cu underway

Growth Projects

- Lombador Phases I & II
- Semblana

Exploration

- Neves-Corvo
- Clare Project, Ireland
- Lakelands Project, Ireland
- Iberian Region



- Enhance operations performance and debottlenecking
- Aggressive exploration and development programs, in particular at Neves-Corvo
- Value awareness and expansion at Tenke
- Growth through accretive transactions:
 - Cu, Zn, Ni
 - Low technology risk
 - Europe/Eastern Europe, South America, Africa
- Maintain and continue to build a strong balance sheet

Corporate Profile

| | | |
|------------------------------------|---------------------|------------------------|
| Stock Listings: | Toronto: LUN | Stockholm: LUMI |
| Basic Shares Outstanding: | 582,475,287 | |
| Recent Share Price – Jan. 20, 2012 | C\$5.09 | |
| 52-Week share price range: | C\$3.17 – C\$9.31 | |
| Market Capitalization: | C\$2,965M | |
| Avg. Daily Volume – Shares (TSX): | 4.96M | |
| Avg. Daily Volume – Shares (OMX): | 4.14M | |

Strong Financial Position

- Excellent rebuilding of Balance Sheet



Cash: +465%



Debt: -80%



Net Cash: +\$404M

Operational Performance & Outlook

2011 Production Results

- Copper production outperforms October guidance figures
- Zinc and lead production in-line with latest guidance

| (contained tonnes) | | 2011 Production Tonnes | 2011 Guidance Tonnes |
|--|-----------|---------------------------------------|----------------------------|
| Neves-Corvo | <i>Cu</i> | 74,109 | 70,000 |
| | <i>Zn</i> | 4,227 | 4,500 |
| Zinkgruvan | <i>Zn</i> | 75,147 | 76,000 |
| | <i>Pb</i> | 32,339 | 34,000 |
| | <i>Cu</i> | 1,768 | 1,500 |
| Galmoy (in ore) | <i>Zn</i> | 32,071 | 31,000 |
| | <i>Pb</i> | 8,791 | 8,000 |
| Total: Ex. Tenke | <i>Cu</i> | 75,877 | 71,500 |
| | <i>Zn</i> | 111,445 | 111,500 |
| | <i>Pb</i> | 41,130 | 42,000 |
| Tenke: 24.75% attributable share | <i>Cu</i> | 31,546 | 30,400 |

2012-2014 Production Guidance

| | 2012 | 2013 | 2014 |
|----------------------------------|--------------------------|--------------------------|--------------------------|
| Copper: | Tonnes | Tonnes | Tonnes |
| Neves-Corvo | 52,500 – 57,000 | 50,000 – 57,000 | 50,000 – 57,000 |
| Zinkgruvan | 2,000 – 3,000 | 5,000 – 6,000 | 5,000 – 6,000 |
| Aguablanca | 500 – 1000 | 5,000 – 7,000 | 6,000 – 7,000 |
| Copper wholly-owned operations | 55,000 – 61,000 | 60,000 – 70,000 | 61,000 – 70,000 |
| Tenke ¹ 24% | 31,500 | ~47,000 | ~47,000 |
| Total Attributable Copper | 86,500 – 92,500 | 107,000 – 117,000 | 108,000 – 117,000 |
| Zinc: | | | |
| Neves-Corvo | 30,000 – 40,000 | 50,000 – 55,000 | 60,000 – 65,000 |
| Zinkgruvan | 75,000 – 81,000 | 75,000 – 80,000 | 85,000 – 90,000 |
| Galmoy (50%) | 4,000 – 4,500 | - | - |
| Total Zinc | 109,000 – 125,500 | 125,000 – 135,000 | 145,000 – 155,000 |
| Lead: | | | |
| Zinkgruvan | 34,000 – 39,000 | 32,000 – 35,000 | 32,000 – 35,000 |
| Galmoy (50%) | 500 – 1,000 | - | - |
| Total Lead | 34,500 – 40,000 | 32,000 – 35,000 | 32,000 – 35,000 |
| Nickel: | | | |
| Aguablanca | 500 – 1,000 | 5,000 – 7,000 | 6,000 – 7,000 |
| Total Nickel | 500 – 1,000 | 5,000 – 7,000 | 6,000 – 7,000 |

¹ Note –Tenke guidance beyond 2012 has not been provided by Operator Freeport -McMoRan Copper and Gold Inc. ("Freeport"). Lundin Mining anticipates the Phase 2 expansion to be completed by 2013.

Neves-Corvo – 2011 Results

- Record tonnes mined and milled
- Copper production of 74,109 tonnes (vs. guidance of 70,000 t)
- Semblana Inferred Resource of 6.58Mt @ 3.0% Cu, 24 g/t Ag
- Ongoing drilling success at Semblana and two new targets
- New mine-site General Manager appointed



| | |
|--------------------------|--------------------------------------|
| Location | • Portugal |
| 2012 Production Guidance | • 52.5 – 57 kt Cu • 30 – 40 kt Zn |
| 2012 C1 Costs | • \$1.80/lb Cu |
| Mine Life | • +10 years |

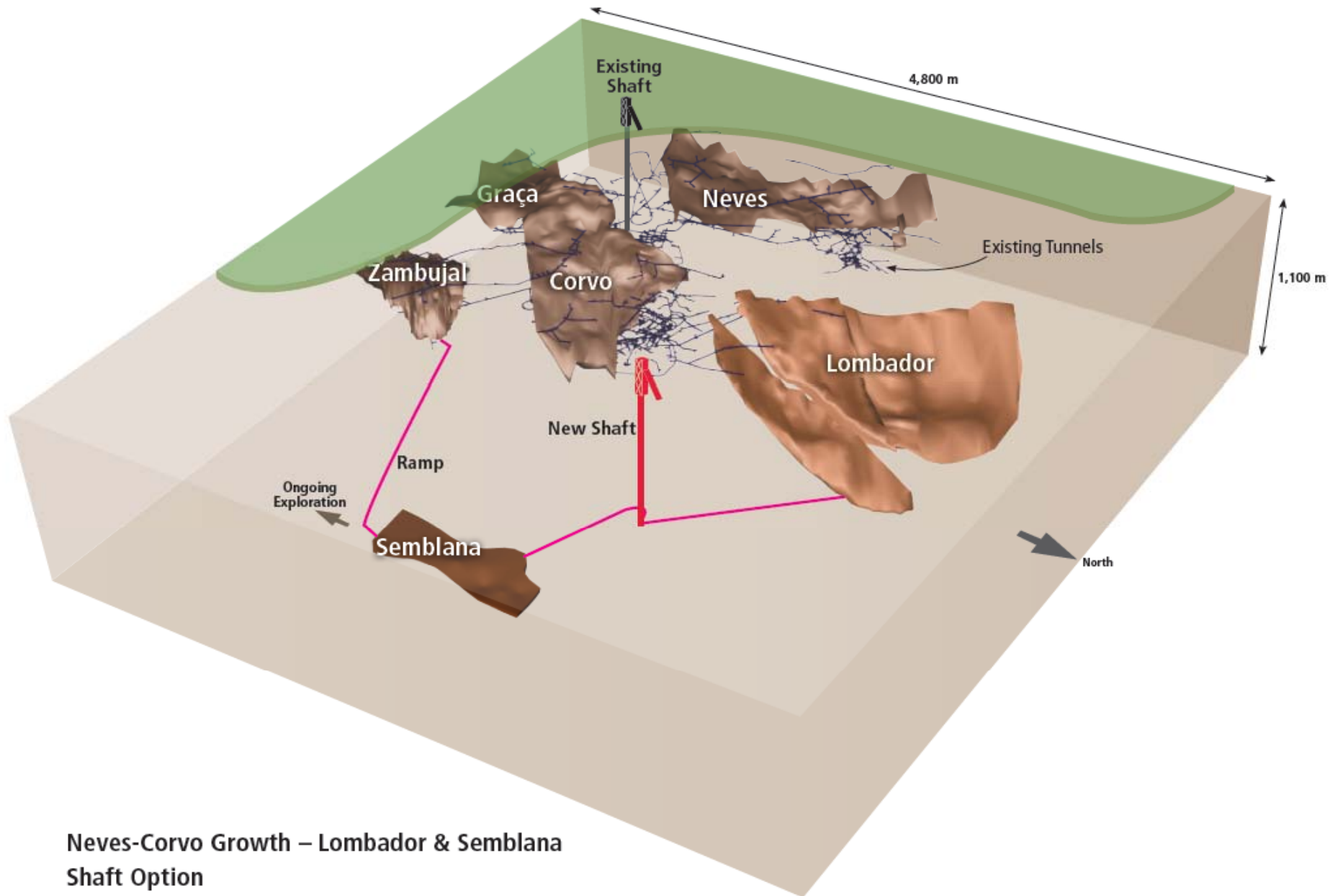


Neves-Corvo – 2012 Outlook

- Multiple internal projects underway to improve operations
- Significantly expanded zinc production - 2012, with new circuit
- Capital investment: Sustaining \$57M, New Projects \$58M
- Lombador Phase 1 underground project advancing on track
- Expanded Semblana and “new target” drilling program
- U/G Materials Handling Study ongoing to assess Lombador deep and Semblana exploitation opportunities

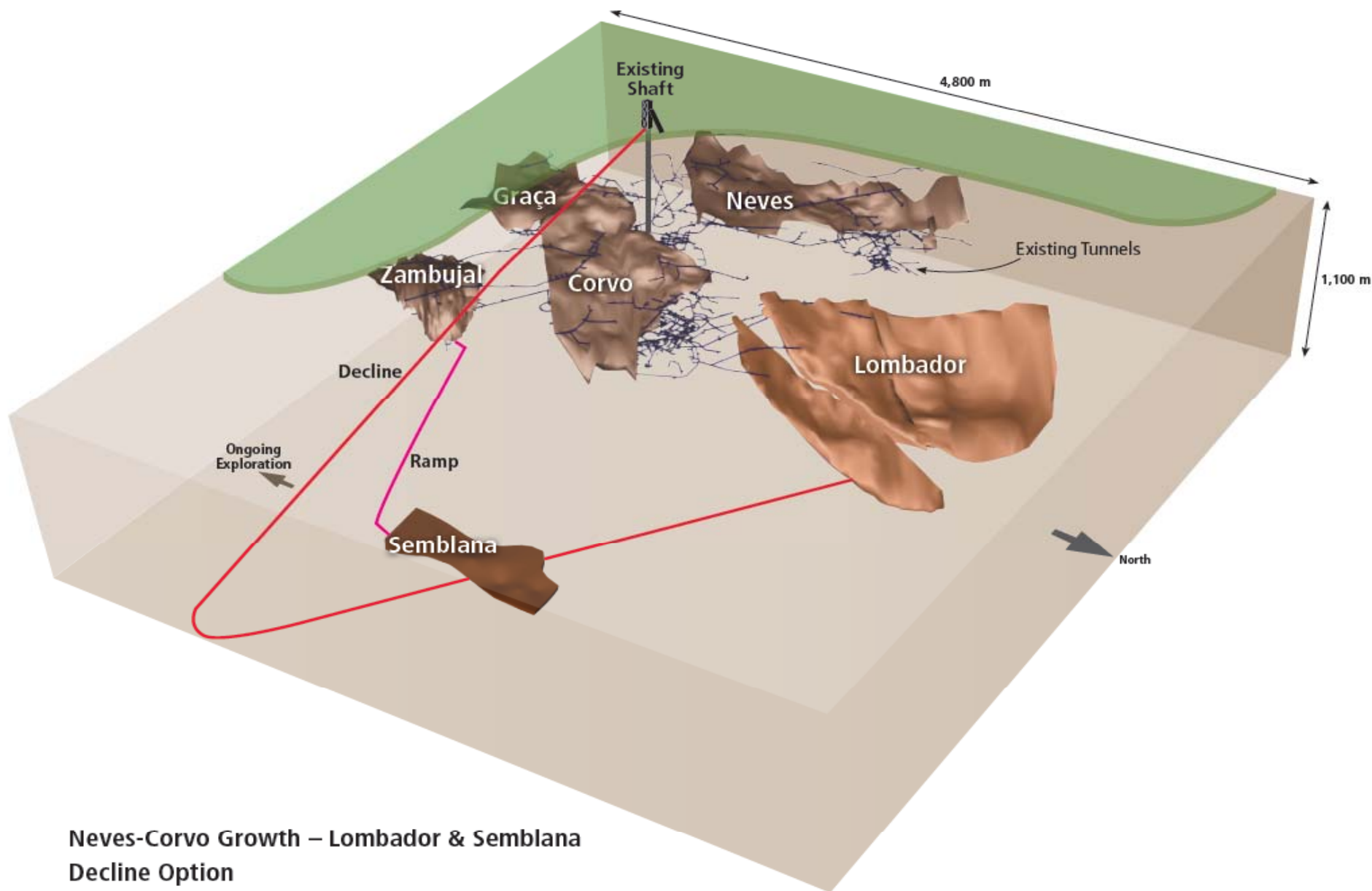


Underground Materials Handling Study



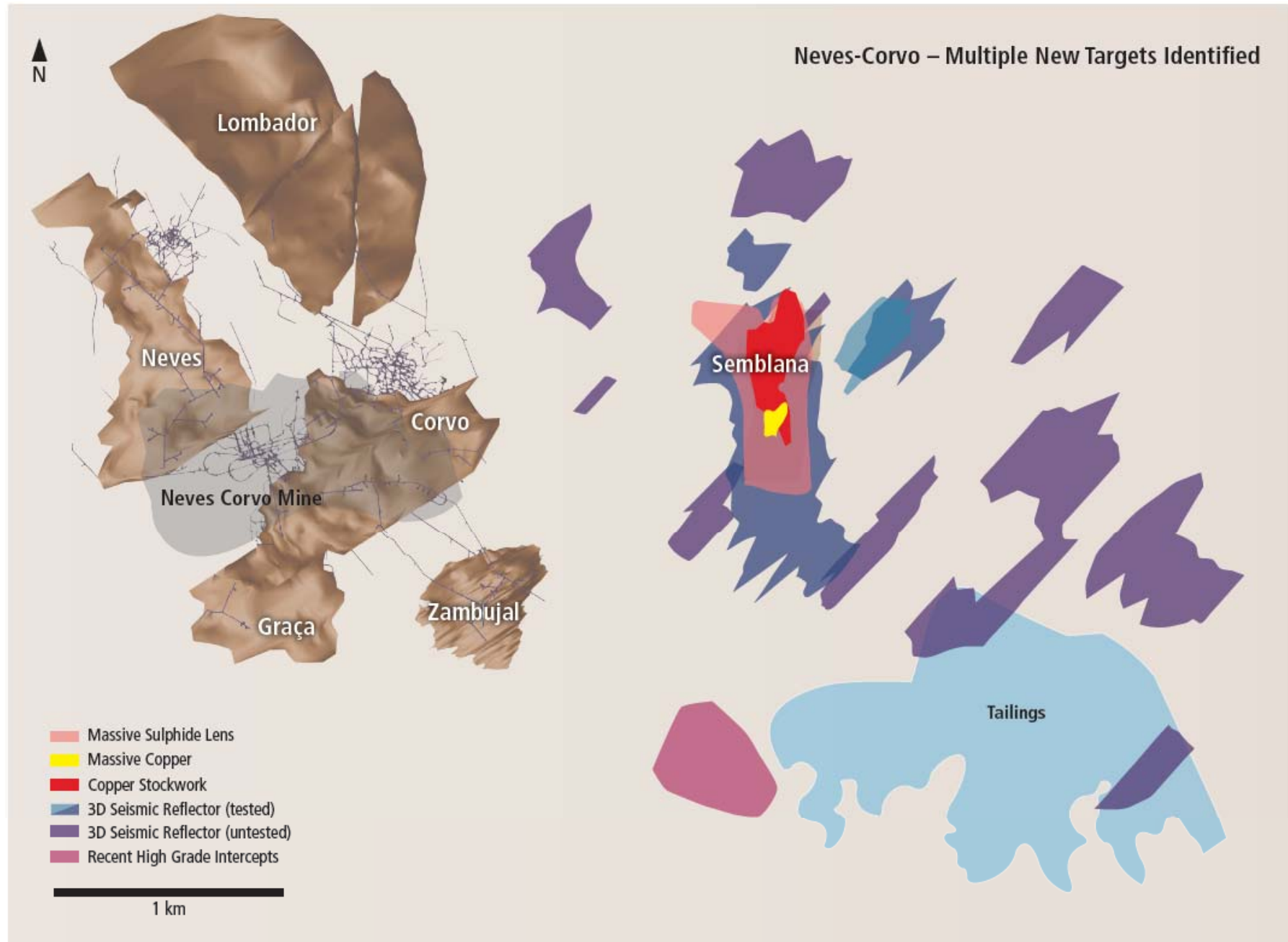
Neves-Corvo Growth – Lombador & Semblana Shaft Option

Underground Materials Handling Study



Neves-Corvo Growth – Lombador & Semblana Decline Option

Neves-Corvo Exploration Targets



Zinkgruvan – 2011 Results

- Record tonnes mined and milled in 2011
- Zinc production of 75,147 tonnes (vs. guidance of 76,000 t)
- New ramp from surface highly successful. Mine continues to outpace mill capacity
- New senior personnel appointments made

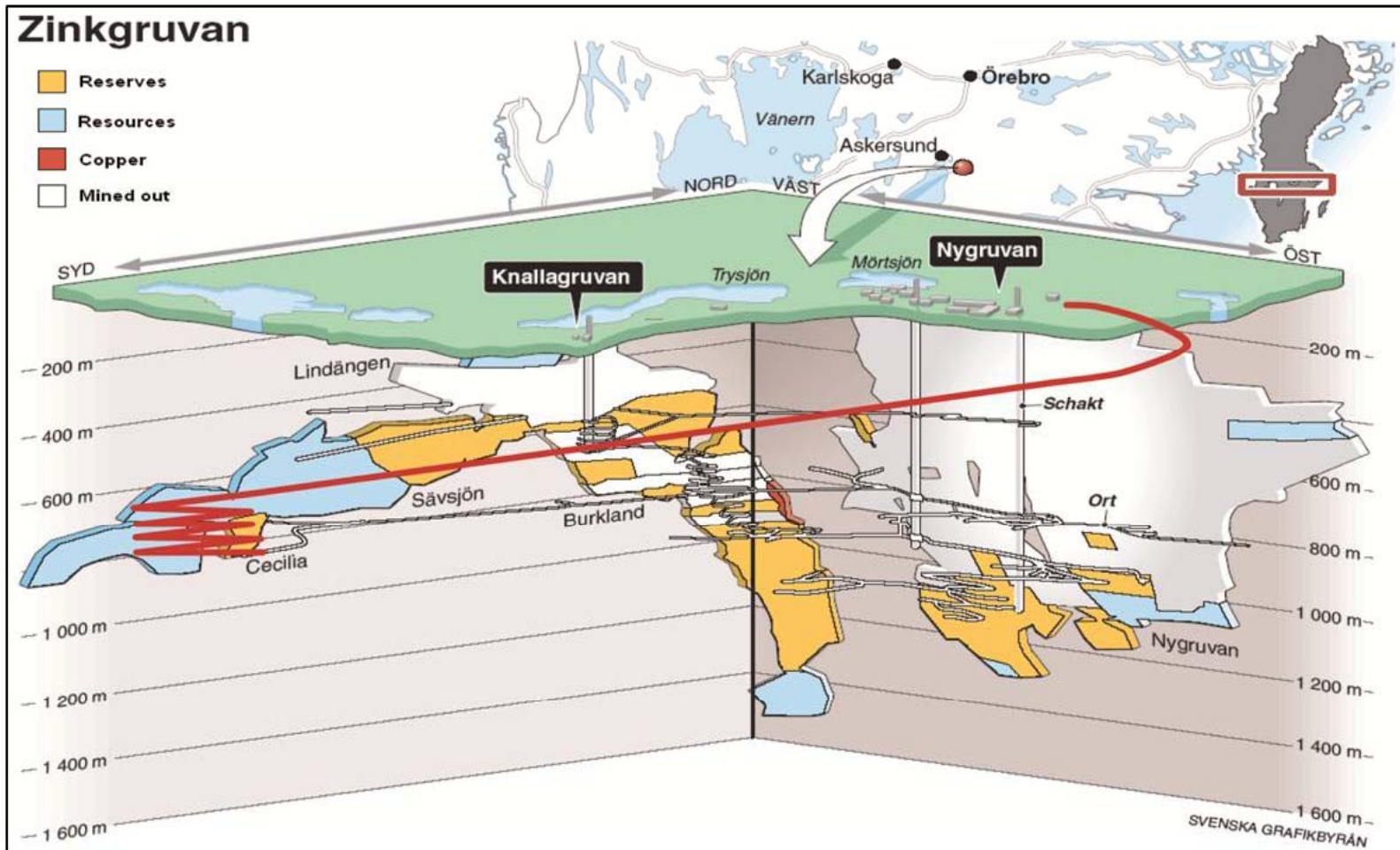


| | |
|--------------------------|--|
| Location | • Sweden |
| 2012 Production Guidance | • 75 – 81kt Zn • 34 – 39kt Pb • 2 – 3kt Cu |
| 2012 C1 Costs | • \$0.25/lb Zn |
| Mine Life | • +10 years |



Zinkgruvan – 2012 Outlook

- Pursuing incremental improvements
 - Debottlenecking of materials handling system
 - Increased investment in underground exploration
 - 2012 capital investment; Sustaining \$35M, New Projects \$7M



Aguablanca – Update and Outlook

- Re-instatement of the ramp and pre-stripping progressing well
- Restart nickel/copper production prior to year end
- Underground study in progress targeting the addition of higher grade material in parallel to open pitting



| | |
|--------------------------|--|
| Location | • Spain |
| Ownership | • 100% |
| 2012 Production Guidance | • 500 – 1,000 t Ni • 500 – 1,000 t Cu |
| 2012 C1 Costs | • N/A |
| Mine Life | • +5 years |



Tenke – Overview

- Attributable Cu prod'n of 31,546 tonnes in 2011 (vs. 29,750 in 2010)
- Going into fourth year of production
- Mineral reserves as at Dec 31, 2010
 - 145.1 million tonnes @ 2.8% Cu; 0.3% Co
- Mineral resources as at Dec 31, 2010
 - Measured & Indicated 455.7 million tonnes @ 2.7% Cu, 0.3% Co
 - Inferred 218.2 million tonnes @ 2.0% Cu, 0.2% Co
- Multiple expansion plans: objective to reach circa 500,000 tpa Cu



| | |
|---------------------------------|--------------------------------|
| Location | • Democratic Republic of Congo |
| Ownership | • 24% |
| 2012 Sales Estimate (LMC share) | • 31,500 tonnes Cu |
| 2012 C1 Cost | • \$1.13/lb Cu |
| Mine Life | • +40 years |



Tenke Expansion Plans

Phase 2 (Underway)

- Oxide, agitated leach expansion from 130 to 195 ktpa Cu cathode, 15 ktpa Co

Future Possible Expansions

- Potential Heap Leach of low grade ore utilizing excess Phase 2 SX-EW capacity
- Multi-phased mixed & Sulfide exploitation
- Extensive drilling and test work in progress for future expansions



Tenke – Phase 2 Expansion

- US\$850 million incremental expansion capex
- Funding obligations split 70:30 between FCX and Lundin
- Expected to be funded out of surplus cash from Tenke operations
- Scheduled startup late 2012
- Project on schedule/on budget



Tank House Expansion

2012 Capital Investment and Exploration

Capital investment: \$95 m sustaining capex and \$315 m new projects (including \$250m for Tenke Phase 2)

Exploration budget: increased to \$50 m in 2012 (from ~\$43 m - 2011)

- Portugal - Semblana drilling continues to intersect thick sections of resource-grade Cu mineralization. Drilling ramped up on new 3D targets.
- Ireland - Clare (Zn-Pb-Ag) properties - Multiple targets being drilled. New greenfields Zn-Pb discovery was made at Lakelands in Q4/11.
- Sweden – Expanded exploration program at Zinkgruvan
- New Assets – Pursuing earn-in opportunities: Europe, Africa and South America



Lundin Mining - Summary

- High quality, long life reserves; exploration upside
- A stake in Tenke - a unique, world-class copper mine
- Strong balance sheet and ongoing cash flows
- Fully-funded organic growth profile
- High leverage to copper and zinc
- Very compelling valuation



Neves-Corvo



Zinkgruvan



Aguablanca



Tenke Fungurume

TSX: LUN
OMX: LUMI



lundin mining