

JOB TITLE: Project Engineer

OPERATION / CORPORATE / EXPLORATION: Eagle Mine

DEPARTMENT: Mine Administration

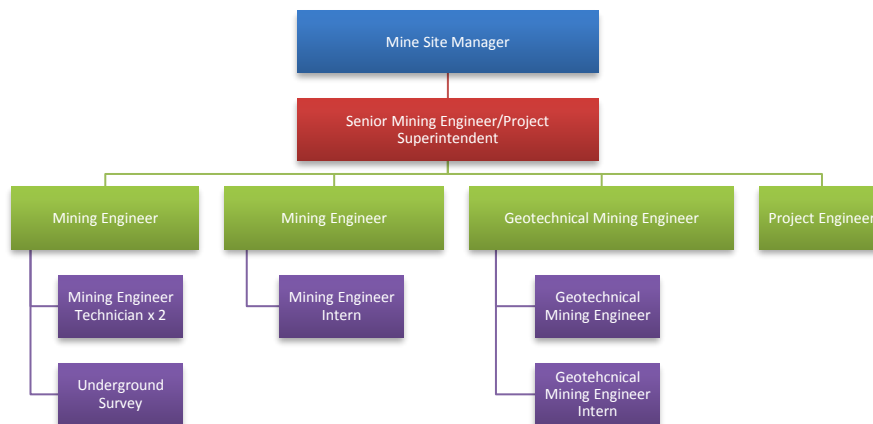
REPORTS TO: Senior Mining Engineer / Project Superintendent

LOCATION: Big Bay, Michigan (Upper Peninsula)

DATE: July, 2017

MAIN PURPOSE: The Project Engineer coordinates and tracks lateral and vertical development activities for Eagle East project along with utilizing knowledge of engineering principles and practices to optimize safety, quality, and productivity of Eagle East project

ORGANIZATION RELATIONSHIP:



MAIN RESPONSIBILITIES/ACTIVITIES:

- Ownership and accountability for Health & Safety within the mine engineering team.
- Active participation in both department & individual Health & Safety Management plans and that work is carried according to all Eagle policies and procedures and compliance to all Federal and State regulations
- Develop mine plans to conform with all regulatory permits and standards; ensure that work planned complies with standards of the Company
- Project Engineering functions to support operational requirements including;
 - Develop practical, accurate and effective mine designs, consistent with industry standards and comply with the recommended design guidelines.
 - Seek input from operations personnel during planning process.
 - Produce capital justifications for capital procurement
 - Develop effective weekly, monthly, annual development plans; provide effective communication to mine operations personnel on mine plans and critical tasks
 - Undertake regular underground inspections to determine status and accuracy of development plans.

Eagle Mine

a subsidiary of **lundin mining**

- Monitor production metrics for performance tracking and present results to management; review contractor performance against planned targets and report significant variances.
- Conduct monthly validation of contractor charges with respect to development and construction activities
- Prepare daily, weekly and monthly project reports
- Support mine services (ventilation, dewatering, communications) functions as required:
 - Ensure effective ventilation design to support safe and efficient operations
 - Maintain and optimize the mine communication system.
- Work with Geotechnical Engineer to ensure all mine designs and layouts are compliant with the Ground Control Management Plan.
- Undertake continuous improvement projects related to mining or maintenance activities as directed. Conduct project evaluations on mine improvement projects and present results to management.
- Other duties required

EDUCATION, QUALIFICATIONS AND EXPERIENCE:

- Bachelor's Degree (B.S.) in Mining Engineering or Civil Engineering
- 5 plus years of professional experience (technical and/or operations); underground experience preferred.
- Experience with Vulcan and Deswik; Experience with AutoCAD is desirable
- Knowledge of underground rock mechanics and ground support design
- Knowledge of mine ventilation systems and application of Ventilation-on-Demand controls.
- Strong analytical abilities along with good communication skills;
- Project Management skills would be an asset.

KEY PERSONAL COMPETENCIES:

- Action oriented and produces results
- Deals well with ambiguity and change
- Leadership – is energized by challenge and can energize others
- Functional and Technical Skills
- Integrity and Trust- able to lead by example
- Build a working culture that promotes the values of Lundin Mining
- Interpersonal Style – relates to many different stakeholders in a positive and values driven manner

HSE ACCOUNTABILITIES:

Employees are responsible for performing all tasks in accordance with relevant HSE Site Procedures, so as to work safely and keep the workplace safe. Everyone in the workplace - both employees and employers - is responsible for his or her own safety and for the safety of co-workers. Lundin Mining Company is responsible for determining steps required to ensure health and safety of all employees. Specifically all employees must:

- Accept personal responsibility for HSE
- Identify hazards unsafe conditions, unsafe actions and conditions that could result in damage to property, injury or impacts to the environment
- Obey any instruction issued to protect their own personal health and safety, and the health and safety of others
- Report, as soon as practicable to their Manager any situations where HSE requirements are not being conformed to within their work area
- Avoid endangerment to any other person through any act or omission
- Use equipment correctly particularly that provided for health, hygiene and safety purposes
- Report all incidents
- Participate in HSE training provided to them

To apply for this role, please email your resume to eaglerecruiting@lundinmining.com.

We are an equal opportunities employer.